



## This Issue

- Lisa Walton – “Stamp, Paint, Stitch” - Workshop  
.....Friday, May 11<sup>th</sup>
- Lisa Walton – “Textile Traveler” - Program  
.....Saturday, May 12<sup>th</sup>
- Sandra Bruce – “Material Matrix” - Workshop  
.....Saturday, June 30<sup>th</sup>
- Velda Newman “Texture and Form” 2 day Workshop  
.....Thurs. – Fri., August 16-17<sup>th</sup>
- WQ Officer & Chairman Reports
- Call for Entries
- Neighborly Guild Calendar

## General Meeting

**Saturday, May 12, 2018**

St. Johns Presbyterian Church - Fellowship Hall  
11000 National Blvd. L.A 90064

**Lisa Walton**

**"Textile Traveler"**

Australian quilt artist and teacher

- 9:30 am Registration, sign-ups & Demonstrations
- 10:00 am Guild business and announcements
- 10:25 am Showcase Speaker -
- 11:55 am Show & Tell
- 11:15 am Speaker – Lisa Walton
- 12:15 pm Adjournment



## Up Coming Workshops & More

- Friday, **May 11<sup>th</sup>** Workshop starts off a special visit from Australian quilt artist, teacher and newly elected president of SAQA, **Lisa Walton**. "**Stamp, Paint, Stitch**" Signup is open.
- Saturday, **May 12<sup>th</sup>** Our May General Meeting features a presentation by **Lisa Walton**, "**Textile Traveler**"
- At the May 12, 2018 meeting we will be opening two upcoming workshops for registration. On **June 30** **Sandra Bruce** will teach us her "**Material Matrix**" technique with a charming coffee cup composition she calls "Wake Up Call". We'll have all the information, supply list and a sample to show at the meeting.
- We will also be taking reservations for our special two day workshop with art quilt icon **Velda Newman** **August 16 and 17**. Velda is an internationally recognized contemporary quilt artist, author and lecturer from Northern California. Known for her large scale, mostly organic designs, Velda creates original quilts of exceptional beauty and craftsmanship. For the past 18 years Velda's work has appeared in many national and international exhibitions and has been featured in over 30 publications. We are thrilled to have her visit Westside Quilters for her workshop and a lecture presentation at our Saturday, August 18 Quarterly Meeting. Full information and a supply list for the workshop will be available at the upcoming. May 12 meeting.
- A reminder to bring any projects you've done in WQ Workshops to show at the May 12 meeting. Anyone finished their Dear Jane quilt from Laura Fraga's class yet? We'd love to see!



## ***PRESIDENT'S MESSAGE***

May, the month of May Flowers, Mother's Day, margaritas for Cinco de Mayo and barbecues for Memorial Day. And, for me the last month as President. Thank you to the Board and WQ members,

I have enjoyed my two years working as President and look forward to helping out with hospitality.

The word for the month of May is AWARENESS.

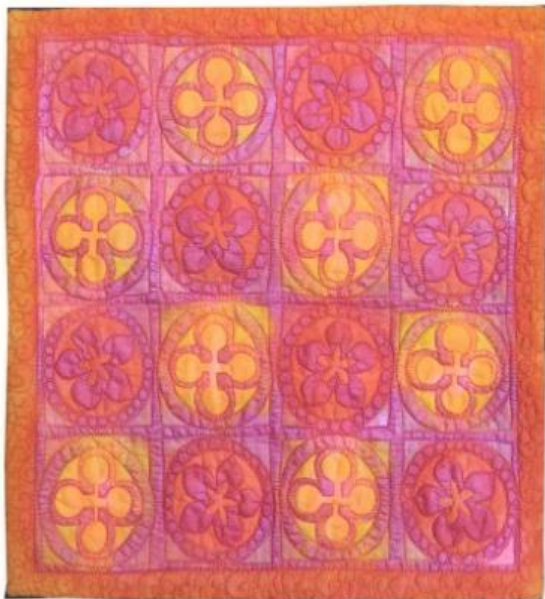
Working for our guild I became aware of the many different faces of our members and the varied styles of quilting. Some quilters use kits and charm packs, making use of beautifully curated fabrics. Some members piece traditional and some more modern. There are quilters who use fabric to tell a story, have a political commentary, or share an abstract idea or dream. There are quilts made for weddings and birthdays and thank you gifts. There are many quilts made and given away with love to family and philanthropy. It's a rich and wonderful world we belong to as quilters, and I think that we are lucky that our guild does a great job at embracing all that this art form can express.

I look forward to seeing you all at the May 12th, general meeting.

Keep on Quilting

Kim Ryan, President





Westside Quilters presents a workshop with  
Australian quilt artist and teacher

**Lisa Walton**

[www.Lisawaltonartist.com](http://www.Lisawaltonartist.com)

**"Stamp, Paint, Stitch"**

**Friday, May 11, 2018 9:30 - 3:30**

St. Andrews Lutheran Church

11555 National Blvd., Los Angeles, CA 90064.

**Workshop Fee \$75.00 (\$70.00 for early registration by  
April 11) Fee for non-members \$90.00.**

**Materials fee \$20.00** due to Lisa on the day of the  
Workshop (see Supply List for what it includes)

**Two spaces left!** We will be starting a waiting list  
because, as we all know, things happen.

### **Stamp, Paint Stitch**

In this exciting technique driven workshop you will create your own original stamps using compressed sponge and then print them onto fabric which will then have additional fabric paint added. Then you can quilt your pieces into cushions or small wall hangings. A great surface design technique experience!

The **Supply List** is posted on the WQ website Calendar Page at  
<http://www.westsidequilterslosangeles.org/Calendar.html> Click on the Supply  
List link on Lisa's workshop listing.

#### **About Lisa:**

Lisa started with traditional quilt techniques over 25 years ago, but she says "I quickly developed the urge to break the rules". She has a fascination with dyeing and surface design and now concentrates on more "serendipitous and experimental pieces". "I have a passion for sharing my knowledge and teaching", she says. In 2010 she was awarded the Jewel Pearce Patterson Scholarship for Teachers by the International Quilt Association in Houston. In 2013 C&T Published her first book *Beautiful Building Block Quilts* and in 2014 and 2015 self-published two subsequent eBooks. Lisa is currently the president of Studio Art Quilt Associates - [SAQA.com](http://SAQA.com) - and international non-profit organization dedicated to promoting the art quilt and the artists who create them.



Her other obsessions for food and travel have opened other doors and now she travels all over the world teaching and leading textile and food tours. Her hand dyed and painted fabrics are available for sale online store Dyed and Gone to Heaven accessed from her website. Lisa Lives in Sydney, Australia with her husband, Peter.

**Want to sign up?** Email to [programs@westsidequilterslosangeles.org](mailto:programs@westsidequilterslosangeles.org) or call Sally Wright at 310-471-6034.

*(more info on page 4)*



**Lisa Walton Workshop**  
**Friday, May 11, 2018**

## **“STAMP PAINT STITCH”**

### **Supply List**

#### **Bring with you**

- Apron or clothes suitable for getting messy
- 1.5” – 2” cheap foam brush
- At least 4” foam paint roller and tray as long as it matches the size of the roller
- Plastic ice cube tray to use for paints
- Jar for water (brush cleaning)
- Small sharp scissors or craft knife and small cutting mat (12”)
- Sharpie or black felt tip pen
- 12-24” ruler and pencil
- Sewing machine in working order with standard sewing foot and free motion quilting foot, bobbins, manual and extension cord.
- Selection of threads for quilting in preferred colorway
- Batting – 60” x 24”

**Material fee of \$20** (due to Lisa on the day of the workshop) includes the following

- 1 meter good quality white cotton fabric
- Compressed Sponge for stamps
- Use of Fabric Paints – range of opaque fabric paint for stamping and transparent fabric paints for colourwash.

Any questions please contact Lisa directly at [lisa@dyledheaven.com](mailto:lisa@dyledheaven.com)





Westside Quilters presents a workshop with quilt artist and teacher

## **Sandra Bruce**

www.SandraBruce.com

### **“Material Matrix”**

**Saturday, June 30, 2018**

**9:30am – 3:30 pm**

**St. John's Presbyterian Church Fellowship- Hall,  
11000 National Blvd.  
Los Angeles, CA 90064.**

**Workshop Fee: \$75.00** (\$70.00 for early registration by May 30<sup>th</sup>). Non-Member Fee \$90.00

Sandra's technique, "Material Matrix", is inspired by the painter, Chuck Close. It involves us- bringing a gridded photograph and interpreting each 2-inch square into fabric, using piecing to achieve the effect. In the workshop, in addition to the technique, she teaches:

- What makes a good photo to use,
- Color and value,
- Loose curved-piecing and
- How to grid your own photo.

Everyone in the class works on the same project, "Wake Up Cup" in order to concentrate on the technique. Sandra provides a template and handouts so the pieces can be finished at home with confidence. The photo grid for the project will be distributed when you sign up for the workshop

The **Supply List** is posted on the WQ website Calendar Page at <http://www.westsidequilter-losangeles.org/Calendar.html> Click on the Supply List link on Sandra's workshop listing.

#### **About Sandra:**

"Like many women I know, I began my love of sewing at about age 8 when my mother taught me to use her treadle sewing machine. I got my own machine as a teenager and never stopped sewing. In 1988, while living in the San Francisco Bay Area, I started a quilting "bee" with quilt artist Therese May and discovered the fun of working on collaborative projects. After moving to the Sierra Foothills in 1990 I took my first official quilting class and have been forever hooked.



I began my quilting business in the fall of 2010 to combine my love of illustration, lettering and quilting. I have been an illustrator and letterer for 35 years, and long arm quilting is really just doing what I've been doing all these years, but with a different tool. I love incorporating writing into my quilting, and "drawing" images that echo the motifs in the fabrics.

I live in Grass Valley, California with Gary, my partner of 34 years, and our teenaged son Matteo. My Gammill, a 14-foot long arm machine named Dixie, is located in my quilting studio in historic downtown Grass Valley.

**Want to sign up?** Email to [programs@westsidequilterslosangeles.org](mailto:programs@westsidequilterslosangeles.org) or call Sally Wright at 310-471-6034.  
*(Supply list on page 6)*



# WESTSIDE QUILTERS



## Supply List

### “Material Matrix - Wake Up Cup”

**Sandra Bruce** [www.SandraBruce.com](http://www.SandraBruce.com)

- Sewing machine in good working order, with a 1/4” foot Rotary cutter and mat, with a sharp blade
- Omnigrid ruler for cutting 2.5 inch squares, any length.
- The photo with the grid (attached)
- A neutral thread
- Sewing kit with the usual tools: scissors, seam ripper, etc.
- Pens or pencils for marking light *and* dark fabric
- A stack of 3” Post-Its for isolating the squares on the photo
- A piece of cardboard, approx. 12” by 12” to arrange your squares and transport to the
- iron and ironing surface
- Paper and pen if you like to take notes (There will be hand-outs)
- Fabric (see note below)
- Optional: Best Press

Regarding fabric: with the photo I have supplied, you will need to begin collecting pieces for class. As you would imagine, you will not be buying yardage, but will need pieces in small amounts to interpret your photo: fat quarters, 1/8 yard cuts, even scraps. You want a *range of values* within each color as far as the photo dictates. Look through your stash first, then take the photo with you to shop if needed. Be adventuresome in your selections, please include prints. Ombres, stripes, and polka-dots are good too!! We will be cutting 2.5 inch squares. *Please do not cut any fabric before class.* If class participants share with each other then we will have a nicer variety. For this piece you will need in class fabric in the following colors: white, grey, green, purple and a small amount of brown. You will notice in my sample I took some liberties in the intensity of my purples and greens.

Artistic license at work! Choose what you like and want to work with. You may bring jelly rolls and other 2-1/2” strips if you have them, just know you will need bigger pieces too, and most of the time.

Feel free to call or email me with questions or concerns. Note: there is a \$3. class fee to cover my handouts, etc. ... Sandra Bruce 530) 210-9748 or (530) 477-1909 sandrabruce@pacbell.net

## PHILANTHROPY

Hello, WQ Members,

We're continuing to make great progress towards collecting quilts for Upward Bound and A Child's Dream. We hope to see many more at our May meeting.

In the meantime, I am preparing a small demonstration on how to crochet an edge on fleece or flannel fabric. The tool used is a skip stitch blade found in Project Linus's Store page (near the bottom). Screw the blade onto an empty rotary cutter to use. The blades differ in stitch length. I believe mine is #1 or possibly #2.

I will also bring sample hats and hat patterns if you feel like making a hat for A Child's Dream.

We are continuing to collect the strip blocks, quilts for Dollies Make a Difference and Wounded Warrior.

Save the date: Saturday, November 10 will be Philanthropy Day.

Delivery of all items will be in early December so everyone has plenty of time to make a hat, or make several more strip blocks, or a quilt or two.

Again, thank you all for your ongoing generosity and hard work.

Perla Rothenberg, Lisa Drew, Virginia Marshall  
Philanthropy Co-Chairs



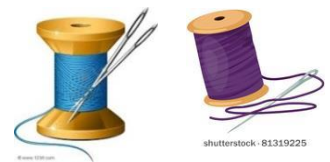
## Leadership.....

Is there a hobby, avocation, or pursuit that's a sweeter journey than quilting? We all started for different reasons—a skilled passed on by a mother or grandmother, a segue from clothing construction, an adjunct from another art form—but whatever the reason, we found our niche and an extraordinary community. Like so many quests, we started at one place but found we had arrived way beyond anything we could have imagined. Some of our fellow members do work so superb that their oeuvres are exhibited in museums, galleries, and books. That may sound totally out of reach for many of us—especially me—but I take heart in the saying, “Every great chess player was once a beginner.”

First quilts were usually for ourselves (or the dog depending on the outcome) but in time both our skill and those first baby quilts grew in size and design. Before long we had gifted most of our family and friends with quilts, wall hangings, and tote bags, so we moved on and found the joy of sharing our quilts with sanctuaries, refuges, hospitals, and sometimes even animals. Many of us continue to take workshops of all kinds to learn new stuff but also for the comradery of like-minded souls as we fumble through constructing itsy bitsy stars within stars. Some create amazing art that combines design elements of shading, quilting, beading, thread painting, fusing, and arranging literally hundreds of pieces of fabric.

So, wherever we find ourselves in this quilting journey—be it our first baby quilt, the best bag lady or dude there is, the kind-hearted charity devotee, or the art quilter ordinaire—it is for sure a sweet, sweet journey.

Sonja Daniel  
Vice President



~~~~~

# ★HAPPY★ BIRTHDAY!

|                    |        |
|--------------------|--------|
| Linda Lardy        | May 9  |
| Pam Overton        | May 13 |
| Glenda Avery       | May 16 |
| Sue Correll        | May 19 |
| Krista Ulman       | May 20 |
| Vicki Fisher-Lerer | May 22 |
| Madhu Mandavia     | May 29 |
| Tanya Heldman      | May 30 |
| Karynn Dittmar     | May 31 |



## MEMBERSHIP

Membership forms will be available at our May meeting for renewals and we are looking forward to all of you renewing. We have lots of exciting speakers and workshops coming up for this next year.

Luann Jaffe  
Membership Chair

## WORKSHOP REGISTRATION

First, please email your intent to attend a workshop to: [Programs@WestsideQuiltersLosAngeles.org](mailto:Programs@WestsideQuiltersLosAngeles.org). At the **WQ website**, choose *Calendar* and scroll down to individual workshops. See the link to the Workshop Registration Form (which you can fill in on-line and then print) and the supply list. **See the workshop no-refund policy (substitutions allowed) shown on the Workshop Registration Form.**

WQ will hold your space at the workshop for 14 days to allow time to mail Registration Form and payment to the WQ post office box. For last-minute registrations, contact the Program Chair ASAP. **Credit cards/debit cards now accepted.** Non-members pay a \$15.00 surcharge. Supply lists for all classes can be found on the Calendar page at [www.WestsideQuiltersLosAngeles.org](http://www.WestsideQuiltersLosAngeles.org). **The class sessions are from 9:30am to 3:30pm.**

## Workshop costs

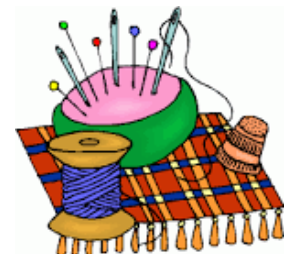
Thanks to our members for being so supportive of our workshops. We, the program chairs, carefully pick our workshop teachers. We look for people that are top in their field and have a good reputation in the quilt world. We are concerned that we vary the skills they teach.

We try to cover all aspects of quilting. Then we concern ourselves with the cost to you our members. We have to pay rent for the workshop; we pay the teacher and provide any meals, housing, and transportation involved. Lots of costs!

It is not our goal to make a profit only to hopefully cover expenses.

So.... your participation is essential.

Your WQ Program Chairs:  
Sally Wright, Kathryn Pellman, Roberta Walley



shutterstock · 81319225



## TREASURER

Karynn Dittmar, Treasurer

|                                      |         |                |
|--------------------------------------|---------|----------------|
| <b>OPENING BALANCE AS OF 6/1/17</b>  |         | <b>8146.58</b> |
| <b>INCOME</b>                        |         |                |
| Membership Dues / Donations          | 3100.00 |                |
| Workshop Fees                        | 5660.00 |                |
| Guest Fees                           | 40.00   |                |
| Fabric Sale Fundraiser               | 994.00  |                |
| Amazon                               | 123.50  |                |
| <b>TOTAL INCOME</b>                  |         | <b>9917.50</b> |
| <b>EXPENSES</b>                      |         |                |
| Workshop Expense                     | 5864.35 |                |
| General Meeting Expense              | 2564.90 |                |
| Charitable Contributions             | 460.00  |                |
| Membership Expense (refund)          | 50.00   |                |
| SCCQG Insurance                      | 310.00  |                |
| Website                              | 220.25  |                |
| PO Box Rental                        | 132.00  |                |
| Philanthropy / Ed. Expense           | 200.00  |                |
| Printing / Promotion / Admin.        | 67.75   |                |
| Square Up Fees                       | 93.09   |                |
| Government Fees                      | 25.00   |                |
| <b>TOTAL EXPENSE</b>                 |         | <b>9987.34</b> |
| <b>NET INCOME</b>                    |         | <b>-69.84</b>  |
| <b>CLOSING BALANCE as of 4/24/18</b> |         | <b>8076.74</b> |



### WEBSITE:

The WQ website at [www.WestsideQuiltersLosAngeles.org](http://www.WestsideQuiltersLosAngeles.org) has been updated with photos from our recent "Slow Stitching Saturday" event on the Photos page as well as the complete upcoming Program Calendar through mid 2019 on the Calendar page.

Sally Wright,  
Website Manager



| <b>Westside Quilters Budget Draft for FY 18-19</b> |           |           | 3/31/2018  |            |                                                |
|----------------------------------------------------|-----------|-----------|------------|------------|------------------------------------------------|
|                                                    |           |           |            |            |                                                |
|                                                    | Actual    | Estimated | Estimated  | Budget     |                                                |
|                                                    | 06/01/16- | April -   |            |            |                                                |
|                                                    | 3/31/2017 | 5/31/2018 | FY 2017-18 | FY 2018-19 |                                                |
| <b>INCOME</b>                                      |           |           |            |            |                                                |
| Membership Dues                                    | 2555      | 2500      | 5055       | 4000       | 80                                             |
| Workshop Fees                                      | 4880      | 1000      | 5880       | 5600       | 7 X 10 X 80                                    |
| Guest Fees                                         | 40        | 0         | 40         | 50         |                                                |
| Donations                                          | 285       | 0         | 285        | 500        |                                                |
| Holiday Tea                                        | 260       | 0         | 260        | 300        |                                                |
| Fabric Sale                                        | 994       | 0         | 994        | 750        |                                                |
| Amazon                                             | 124       | 15        | 139        | 200        |                                                |
|                                                    | 9138      | 3515      | 12653      | 11400      |                                                |
| <b>EXPENSES</b>                                    |           |           |            |            |                                                |
| Accounting Fees                                    | 0         | 0         | 0          | 0          |                                                |
| Administration                                     | 40        | 0         | 40         | 100        |                                                |
| General Meeting Expense                            | 2965      | 0         | 2965       | 2300       | room rent,<br>speaker fees,<br>travel          |
| Government Fees                                    | 25        | 0         | 25         | 50         |                                                |
| Holiday Tea Contribution                           | 260       | 0         | 260        | 300        |                                                |
| Donation                                           | 200       | 0         | 200        | 200        |                                                |
| Insurance                                          | 270       | 0         | 270        | 270        |                                                |
| Membership Expenses                                | 50        | 0         | 50         | 0          |                                                |
| Philanthropy Expenses                              | 200       | 0         | 200        | 250        |                                                |
| Post Office Box Rental                             | 132       | 0         | 132        | 150        |                                                |
| Printing/Promotion                                 | 28        | 0         | 28         | 100        |                                                |
| SCCQG Dues                                         | 40        | 0         | 40         | 40         |                                                |
| Square Up Fees                                     | 85        | 50        | 135        | 100        |                                                |
| Website                                            | 220       | 0         | 220        | 250        |                                                |
| Workshop Expenses                                  | 5465      | 1200      | 6665       | 7400       | room rent,<br>teacher fees,<br>travel/expenses |
|                                                    | 9980      | 1250      | 11230      | 11510      |                                                |
|                                                    | -842      | 2265      | 1423       | -110       |                                                |

# ***Programs: Follow Up***

## **Slow Stitching Saturday**

Thanks all of our WESTSIDE QUILTERS for joining together for a relaxing “no sewing machine day”. The weather was prefect. We gathered inside and outside at our house. It was a great day to move projects along or finish a long awaited binding. Knitting, crocheting, piecing, and chatting lasted all day. The doorbell rang and we pulled up another chair.

Good time for all of us to get to know each other.

Thanks Sally Wright for organizing the day.

Roberta Walley  
Programs



## ***Programs:***

After three years it's time for Kathryn Pellman, Roberta Walley and myself to step down as your Programs Co-Chairs. We've had a great time! We've met some amazing icons in the quilting world and enjoyed their expertise and their company. We've attempted to offer something for everyone in WQ no matter their interests and we've learned a lot about the quilting industry and what makes it all work. Most of all, we've enjoyed the time spent with all of you members during our workshops and various programs. Our thanks to all of you who have made our jobs easier by showing up to help set up workshops and stayed a little later to help clean up. We appreciated your efforts more than you know! We've also appreciated all your suggestions for teachers and speakers. We are intent on passing down what we've learned to our incoming Co-Chairs Pat Karasick and Brenda Gottfried. To that end we'd like to ask any of you who attended SCCQG's Meet The Teachers last month to let them know if there was a teacher you were particularly impressed by and who you would like to have visit WQ. after May 30 [Programs@westsidequilterslosangeles.org](mailto:Programs@westsidequilterslosangeles.org) will go directly to them. Thanks, again, WQ!



Sally Wright,  
Programs Co-Chair



# Calls for entry

Continuing our notifications for ways to display your quilts and textile pieces to a wider audience... Entering shows is not difficult, but to begin here are a few guidelines:

- Always make sure you read everything in the call including the calendar, requirements, rules, etc. Especially the rules! Will save headaches and disappointment later on.
- Keep a record on your entries so you won't be caught with a quilt needing to go two places at once. Having to remove a quilt from a show or exhibit because you misread the exhibition dates is a no-no. Ask me how I know...
- Having a great photo of your quilt - straight on, in focus, not on a bed or held up showing hands and feet, super important. There is lots of great info on quilt photography on line. Google!
- Don't be intimidated or depressed by a rejection! There are lots of different reasons why a quilt doesn't fit into a specific show. It is usually not because your quilt is bad!

The calls below are just a sample of the many opportunities out there. For more search "Fiber Art Calls for Entry" or "Quilt Calls for Entry"

**AQS Quilt Week Fall Paducah** <http://www.quiltweek.com/contest/> Aug 24 – Sep 14, 2018 (ship+show) Entry Deadline May 4, 2018

Several opportunities for entry at international **Quilt Festival Houston, November 8-11, 2018:**

**Tactile Architecture** Call is open March 14 through May 10, 2018

<http://callforentriesarchitecture.com>

Buildings have a long history of inspiring the creative designs of quilt makers. This annual juried exhibit challenges quilt makers to create works based on architectural themes and inspirations. This exhibit will premiere at International Quilt Market and Festival November 2018.

**Landscape Quilts** - Call is open March 7 through May 3, 2018

<http://callforentrieslandscape.com>

From valleys and volcanoes, and mountains to monuments, landscapes often inspire artists, including many in the quilt world. The quilts in this exhibit were created using a variety of styles and techniques, all inspired by memorable landscapes.

**Primitive Quilts**-Call is open March 15 through May 17, 2018 <http://callforentriesprimitive.com> From hand pieced to machine made, the simple and unassuming designs of primitive quilts lend themselves to all techniques of quilt making. This exhibit includes recently made quilts created in the primitive style.

**International Quilt Association - World of Beauty 2018** This is the judged show at International Quilt Festival Houston <https://www.iga-judgedshow.org> Call is open now through May 31, 2018.

**Power of Women** - Call is open April 16 through June 13, 2018 <http://callforentriesprimitive.com>

Join us as we celebrate the power of women. Entrants are invited to create a quilt or sheer art cloth that expresses their love and appreciation of an influential mother, sister, aunt, friend, or any greatly admired woman. This unique installation will feature three separate display sections, each telling a part of the story.

*Other Exhibits:*

**AQS Quilt Week Des Moines/VA Beach** [www.aqsquiltweek.com/contest/](http://www.aqsquiltweek.com/contest/) Sep 7 – Oct 3, 2018 Entry Deadline June 1, 2018

**It's All Relative (Rochester, NY)** <http://www.experiencefiberart.com/entryformsmurmurs.php>

Sep 1 – Nov 30, 2018 <http://www.experiencefiberart.com/> Entry Deadline June 1, 2018

**Fiberart International, 2019, Pittsburgh, PA** [https://www.callforentry.org/festivals\\_unique\\_info.php?ID=4691](https://www.callforentry.org/festivals_unique_info.php?ID=4691) The exhibition runs May 10 to August 23, 2019 Call is open now through August 31, 2018

Fiber Arts Fiesta, Albuquerque, NM [http://www.fiberartsfiesta.org/f\\_entry.html](http://www.fiberartsfiesta.org/f_entry.html) Entry Deadline March 1, 2019

Questions? [sally@sallywrightquilts.com](mailto:sally@sallywrightquilts.com)

Sally Wright



## ***A NEIGHBORLY GUILD CALENDAR***

| <b>May 2018</b>                                                                                                                       |                                                                                                               |
|---------------------------------------------------------------------------------------------------------------------------------------|---------------------------------------------------------------------------------------------------------------|
| May 2<br>Santa Monica Quilt Guild<br><a href="http://www.santamonicaquiltguild.org">www.santamonicaquiltguild.org</a>                 | <u>Frances Moore</u><br>Quilter and Teacher Trunk Show                                                        |
| May 6 & 7<br>San Fernando Valley Quilt Association<br><a href="http://www.sfvqa.net">www.sfvqa.net</a>                                | Quilt Show: "Quilting in the Valley – Quilts for All Seasons"                                                 |
| May 9<br>Orange County quilters Guild<br><a href="http://www.orangecountyquiltersguild.com">www.orangecountyquiltersguild.com</a>     | <u>Arlene Arnold</u><br>Workshop: Imogene's Basket                                                            |
| May 9 & 12<br>Glendale Quilt Guild<br><a href="http://www.glendalequiltingguild.org">www.glendalequiltingguild.org</a>                | <u>Mel Beach</u><br>Program: Challenge Yourself<br>Workshop: Walking Foot Wow                                 |
| May 11 & 12<br><b>Westside Quilters</b><br><a href="http://www.WestsideQuiltersLosAngeles.org">www.WestsideQuiltersLosAngeles.org</a> | <b><u>Lisa Walton</u></b><br><b>Workshop:- Stamp, Paint, Stitch</b><br><b>Program: Textile Traveler</b>       |
| May 14<br>LA Modern Quilt Guild<br><a href="http://www.lamgg.blogspot.com">www.lamgg.blogspot.com</a>                                 | <u>Meeting</u>                                                                                                |
| May 15 & 16<br>South Bay Quilters Guild<br><a href="http://www.southbayquiltersguild.org">www.southbayquiltersguild.org</a>           | <u>Lisa Walton</u><br>Program: Leap and the Net Will Appear<br>Workshop: Beading Embellishment                |
| May 20<br>African American Quilters of Los Angeles<br><a href="http://www.easysit.com/aaqla">www.easysit.com/aaqla</a>                | <u>Meeting</u>                                                                                                |
| <b>June 2018</b>                                                                                                                      |                                                                                                               |
| June 2 & 6<br>Santa Monica Quilt Guild<br><a href="http://www.santamonicaquiltguild.org">www.santamonicaquiltguild.org</a>            | June 2 Celebrating the Quilts of Kathryn Small<br>June 6 Trunk Show - Maureen Gardner                         |
| June 11<br>LA Modern Quilt Guild<br><a href="http://www.lamgg.blogspot.com">www.lamgg.blogspot.com</a>                                | <u>Meeting</u> - 2 <sup>nd</sup> Monday of the month                                                          |
| June 13<br>Simi Valley Quilt Guild<br><a href="http://www.simivalleyquiltguild.org">www.simivalleyquiltguild.org</a>                  | <u>Heidi Stagno</u><br>How Do I Quilt My Top                                                                  |
| June 16<br>Glendale Quilt Guild<br><a href="http://www.glendalequiltingguild.org">www.glendalequiltingguild.org</a>                   | Reds, Whites and Blues: Making Quilts for Veterans                                                            |
| June 17 & 18<br>African American Quilters of Los Angeles<br><a href="http://www.easysit.com/aaqla">www.easysit.com/aaqla</a>          | <u>Meeting</u> – third Sunday of the month<br><b>Juneteenth Exhibit</b> at Mills Park Sat. June 17th 11am-6pm |
| June 19 & 27<br>San Fernando Valley Quilt Association<br><a href="http://www.sfvqa.net">www.sfvqa.net</a>                             | Veterans Quilt Project<br>Quilters For Others                                                                 |
| June 20<br>Los Angeles County Quilters Guild<br><a href="http://www.quiltquildla.org">www.quiltquildla.org</a>                        | Workshop: Shirley McGuire and Maureen Waterhouse - "How to Do Wool Applique Without Going Broke"              |
| June 30<br><b>Westside Quilters</b><br><a href="http://www.WestsideQuiltersLosAngeles.org">www.WestsideQuiltersLosAngeles.org</a>     | <b><u>Sandra Bruce</u></b><br><b>Workshop: "Matrrial Matrix"</b>                                              |

## OUT AND ABOUT

- ✂ The **Huntington Library and Galleries** is showing eight 19<sup>th</sup> Century Quilts.  
For more information go to [www.huntington.org](http://www.huntington.org).
- ✂ **Quilting in the Valley “Quilts for All Seasons” Quilt Show** May 6-7  
Sponsored by San Fernando Valley quilt Association and Valley Quilters Guild.  
Airtel Plaza and Hotel 7277 Valjean Ave. Van Nuys
- ✂ Quilters by the Sea Quilt Guild will have their opportunity quilt “Fractured Fiesta” at WQ’s  
May 12<sup>th</sup> General Meeting.
- ✂ **FantaSea of Quilts – Quilt Show** June 2-3 Beach Cities Quilters Guild, Aliso Viejo.  
[www.beachcitiesquilters.org](http://www.beachcitiesquilters.org)
- ✂ **Central Coast Quilt Shop Tour** – June 1, 2, & 3, 2018 <https://quiltshopsofthecentralcoast.com>
- ✂ Seven Sisters Quilt Show – A Multi-Guild Regional Show June 26 30  
Alex Madonna Expo Center San Luis Obispo
- ✂ 2018 Southern California Quilter’s Run – 20<sup>th</sup> Anniversary “California Here We Come”  
July 12 – 15 & 19 – 22 <https://quiltersrun.com>

**See the Speaker Calendar of the Southern California Council of Quilt Guilds for additional events.** Go to [www.sccqg.org](http://www.sccqg.org) scroll down to the bottom of the homepage and click on the box “Speakers” and see other SCCQG guilds and speakers into 2018.



### **Editor’s Note:**

What a great journey quilting is!!! The people you meet and the friends you make. Stepping back in time trying to make time honored established quilt patterns and imagining them in traditional fabrics or reimagining them in new exciting colors and wild patterned fabrics. Moving through the creative genre of art quilting or modern quilting, what a treat and so much fun!

I want to thank our three outgoing Programs Co-Chairs for guiding my quilting journey by bringing so many wonderful quilting programs to our Westside Quilter Guild over the last 3 years. Thank you Roberta, Sally, and Katheryn for guiding us on a fun quilting journey.

And, thank you to our “Out Going” and outgoing President, Kim Ryan. You have lead us with seamless poise and heaps of fun! I’ve love your word of the month, you have caused me to pause and reflect.

Thank you all,

Happy Stitching,  
Debbie Nussbaum



On March 3, 2018, the Westside Quilters (WQ) Executive Board met at Sally Wright's home. Vice-President Sonja Daniel, who took over for President Kim Ryan, called the meeting to order at 10:00 a.m.

Vice President: Sonja asked for approval of the minutes of the January 27th Board meeting. Sally Wright made the motion and Virginia Marshall seconded it. The minutes were accepted as e-mailed to the Board.

As chair of the Nominating Committee, Sonja recruited Brenda Gottfried and Pat Karasick to become Program Chairs for the next two years. It is hoped that a third person will come forward to assist Brenda and Pat. Also, WQ needs to choose a new President, since Kim's term is completed at the May 11th quarterly meeting.

Treasurer: Karynn announced that WQ's financial situation is good. She will provide an end of year report on WQ's workshops, which will help us know where money was made and lost.

Membership: Luan has heard from several people who want to join a mini-group and she is working on that. Three people joined Westside Quilters at the February meeting. We now have 86 members. Luann suggested that sending guests a "thank you" for coming to our meeting might encourage more new people to join WQ.

Roberta commented that moving the Membership table closer to the front door at WQ's meetings created a more welcoming atmosphere.

Website: Sally Wright uploaded all the quilts from the February meeting's Show & Tell to the website. A new list of Programs will soon be available, and a new membership form will be available on the website for membership renewal in May.

Philanthropy: Quilts and other items are still being collected for Upward Bound, Child's Dream and Wounded Warriors. Patterns and suggestions are on the website. Work is continuing on the paper-backed scrap-strip-block begun last fall.

Programs: Laura Fraga's Dear Jane workshop has 15 people signed up to take it. The workshop will be held at St. John's and there will be security on site. The Slow Stitch (hand work) gathering is set for April 21st at Roberta's home. This is a no charge event. Every attendee should bring his or her own lunch, while drinks and dessert will be provided by WQ.

Since Pat and Brenda have agreed to work on Programs for the next two years, it was suggested that they be encouraged to attend the SCCQG's Meet the Teachers event on April 14th.

With South Bay Quilters, WQ will host Australian quilter Lisa Walton for our May workshop, "Stamp Paint Stitch", and our May quarterly meeting. Perla will provide the demonstration for the May meeting by demonstrating crocheting an edging for a fleece or flannel blanket. Kathryn will contact the Branch Gallery to try to arrange our May Showcase Speaker.

WQ's March Board meeting ended before noon. The next Board meeting will be April 28, 2018 at 10:00 a.m. at Sally's home.

Respectfully submitted,

Sally Madigan  
Recording Secretary

